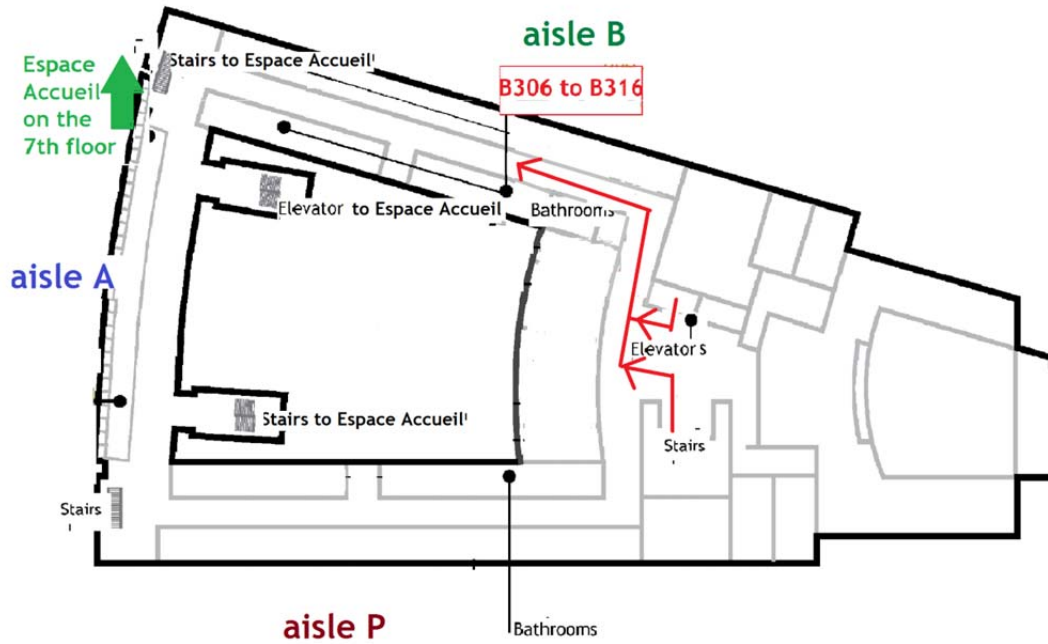
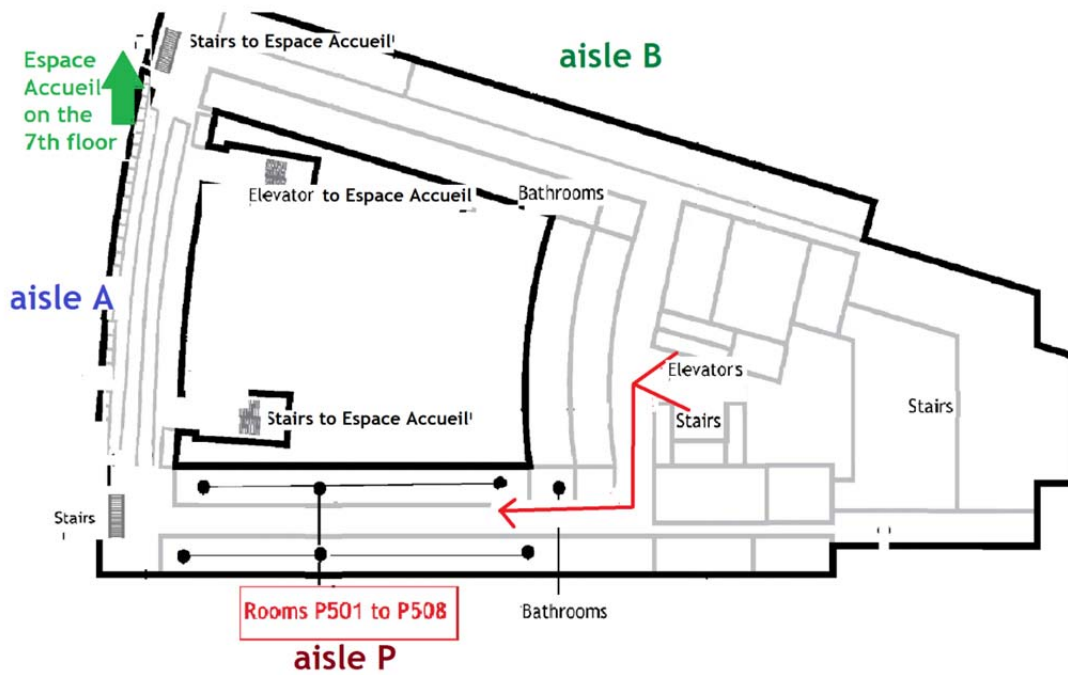


MAPS AND DIRECTIONS

3rd Floor Thursday 2nd July



5th Floor Friday 3rd July



MAPS AND DIRECTIONS

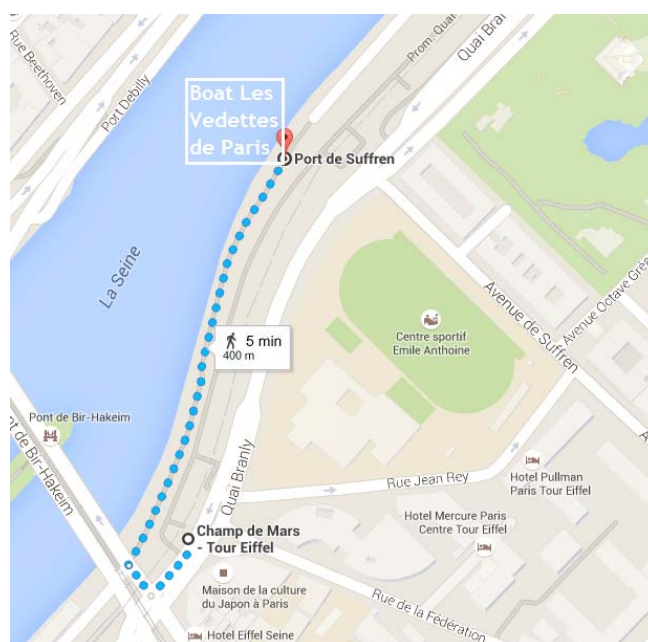
Itinerary from the University of Paris-Dauphine to the conference dinner

The conference dinner will be held on the Vedettes de Paris boat at Port de Suffren, 75007 Paris.

To get to the restaurant, take the RER C “Avenue Foch” (towards Massy Palaiseau) located just in front of the University Paris-Dauphine and descend at “Champ de Mars- Tour Eiffel”. The journey takes approximately 10 minutes.



From the “Champ de Mars- Tour Eiffel” RER train station, it is a short walk along the banks of the Seine (about 5 minutes) to the restaurant boat at the foot of the Eiffel Tower.



We wish you a pleasant conference dinner!